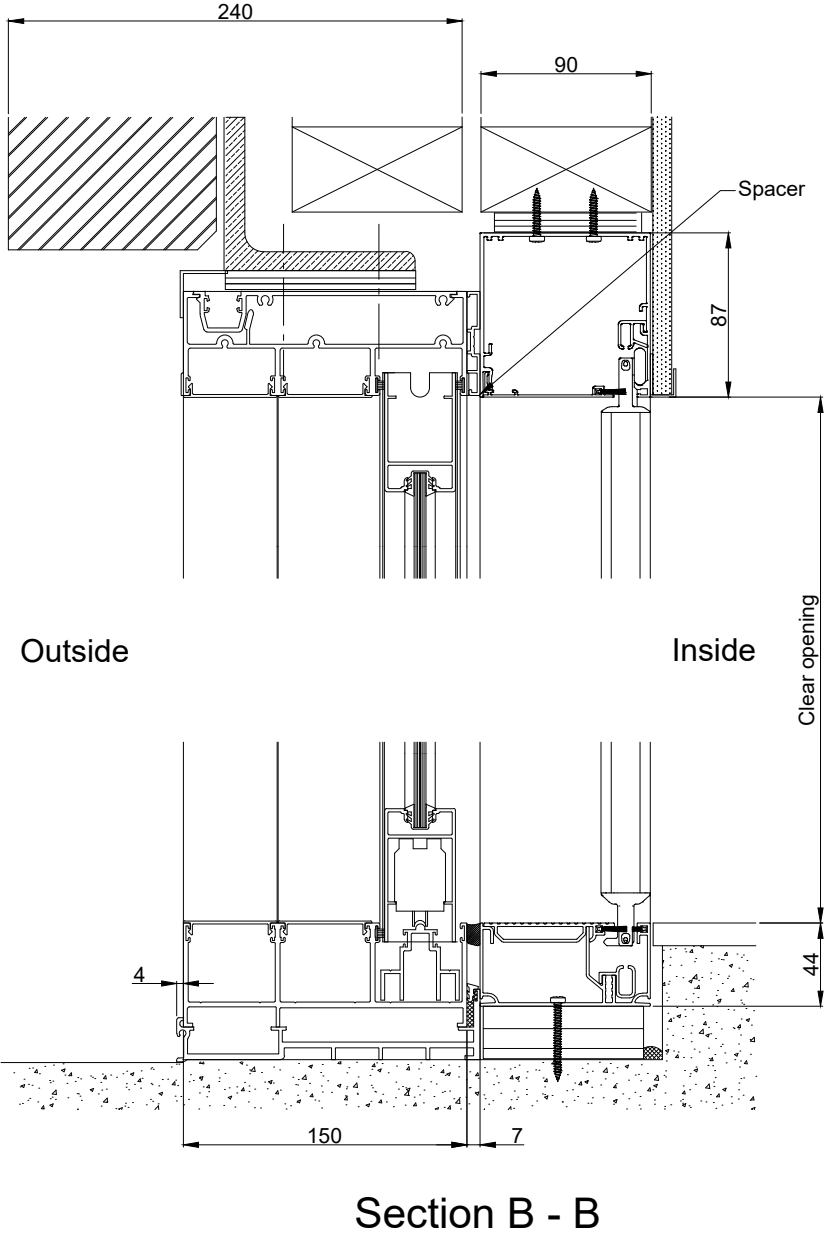
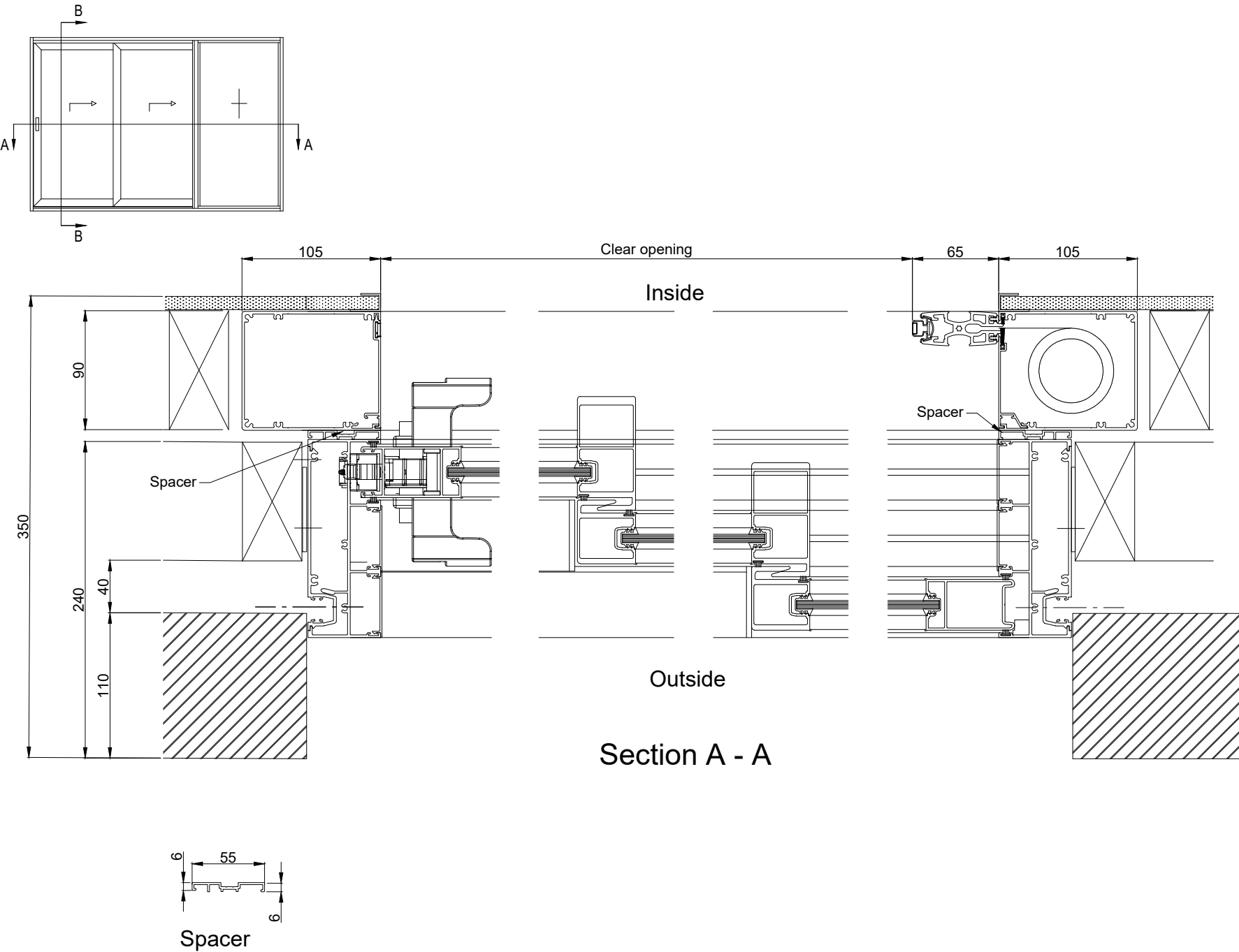


S4 and XXO Sliding Door - Away Installation - Brick Veneer Wall Construction Details



- Notes:
- 1. Weather performance and drainage condition must comply with door manufacturer's instruction.
 - 2. Door drawing is a courtesy of AWS. Details has been removed to protect IP.
 - 3. Order S4 Screen with AWAY installation to avoid door handle.